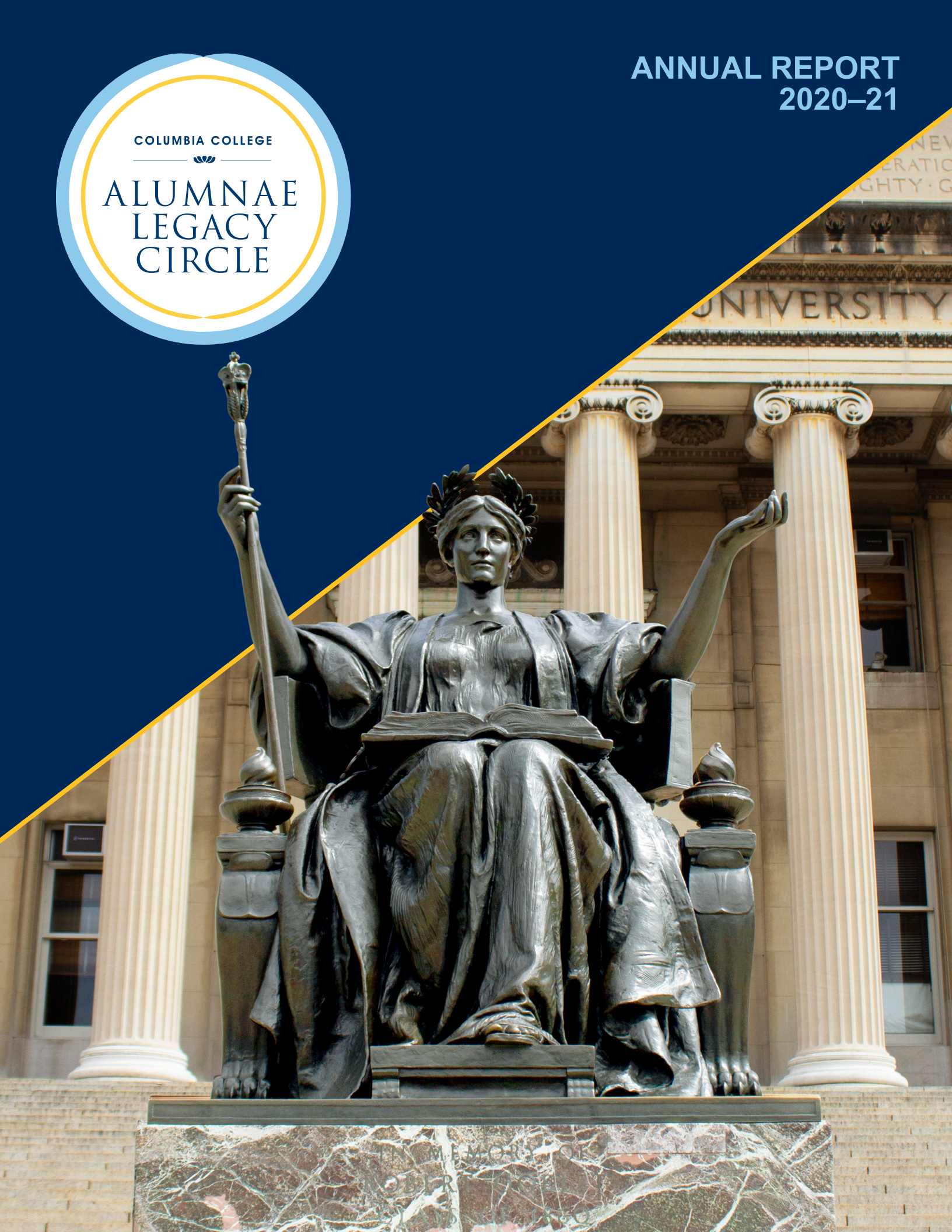


ANNUAL REPORT  
2020-21

COLUMBIA COLLEGE

ALUMNAE  
LEGACY  
CIRCLE





## A NOTE FROM THE DEAN

Dear Alumnae Legacy Circle members,

Over the past five years, the Alumnae Legacy Circle (ALC) has been driven by an unwavering dedication to Columbia College. **I am deeply grateful for the efforts of this group, which has grown to 112 alumnae from around the world.** The expansion of this leadership society — and especially its impressive recruitment of so many members of the young alumnae community — is testament to the importance of the ALC and the enthusiasm for female-driven philanthropy.

Included in this Annual Report are stories and highlights that showcase the continued efforts of this incredible cohort last year. Your generosity made an impact through need-based financial aid, internships and research stipends, the Core Curriculum, student life and much more. During the 2020-21 fiscal year, **the ALC collectively raised \$4.69 million for Columbia College, of which \$2.3 million was allocated to the Columbia College Fund.**

With the partnership of many ALC members, the College expanded our commitment to our students through two new initiatives. In May, I announced the **College's commitment to raising \$500 million for financial aid** by 2025 as part of the University-wide Columbia Student Support Initiative. Additionally, the College launched the **College Walk Society, a giving society to recognize donors** who make leadership gifts in support of financial aid. I hope you join me in applauding these endeavors to eliminate financial barriers from talented students accessing a transformative education.

As we reflect on the past year, I would like to recognize **Cindy Z. Michel CC'95** for her work as co-chair of the Alumnae Legacy Circle as she moves on to other service at the College. In addition to being a founding member, she has stewarded the ALC for three years and taken great initiative in shaping this remarkable leadership society.

**Thank you again for your generosity and partnership** as members of the ALC and your dedication to helping the College create the best undergraduate experience possible for our students.

Roar, Lion(s), Roar,

James J. Valentini  
Dean of Columbia College and  
Vice President for Undergraduate Education



## A MESSAGE FROM OUR CO-CHAIR

Dear Alumnae Legacy Circle members,

Fiscal Year 2020–21 was unprecedented in so many ways, and yet, despite the challenges, our cohort came together to inspire one another and accomplish so much. Among many outstanding achievements — including fostering community through our events and supporting countless College priorities — we expanded our reach by **welcoming 14 new ALC members** and growing our leadership committee.

ALC members continued to shine as active leaders at Columbia in so many ways. **Diana Greenwald CC'11** took on the role of vice chair for the ALC, bringing a fresh perspective to our leadership group. **Nairi C. Balian CC'88, P: CC'16, CC'22, CC'23** expanded her support of the College by serving as vice chair of the Board of Visitors. **Michele A. Esposito CC'96** stepped up to serve as Columbia College's 1754 Society chair, working to increase membership in this important giving society. **Lexi S. Diamond CC'91** received the 2021 President's Cup, the highest recognition awarded by the Columbia College Alumni Association, for her service in a reunion year. **Michelle Estilo Kaiser CC'87, PH'92, PS'97, P: CC'20, CC'25** was awarded a 2021 Alumni Medal by the Columbia Alumni Association for her incredible efforts in strengthening Columbia's community. I continue to be inspired by the commitment of our members to Columbia through their volunteerism.

It has been a **great pleasure and honor to serve as co-chair of the Alumnae Legacy Circle** for the past three years. As a founding member, I am incredibly proud of the growth of this group and its impact on the College. It has been a joy to help lead our efforts to bring attention to women giving back and serving as leaders. Our community is a fantastic example for my daughter of the importance of philanthropic engagement and investment.

Thank you again for your membership in the ALC. Your commitment is not only an incredible act of generosity, but an important venture in **raising your voices as female philanthropists**. I deeply appreciate your dedication to the College.

Warm regards,

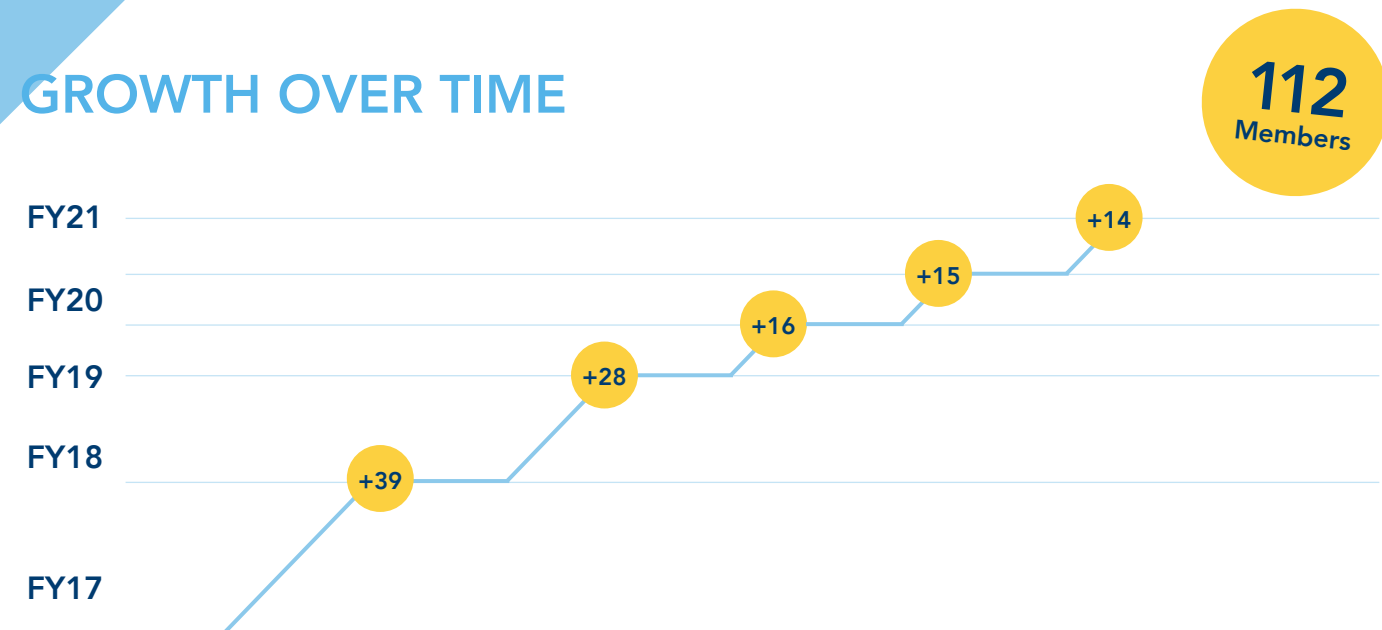
Cindy Z. Michel CC'95  
Co-chair, Alumnae Legacy Circle

2020–21

# MEMBERSHIP

The Alumnae Legacy Circle continues to expand, with **112 members in 16 states and 6 countries around the world!**

## GROWTH OVER TIME



## NEWEST MEMBERS

The ALC welcomed **14 new members** this year! Special thanks to these incredible alumnae for their generosity and contributions to this remarkable community.

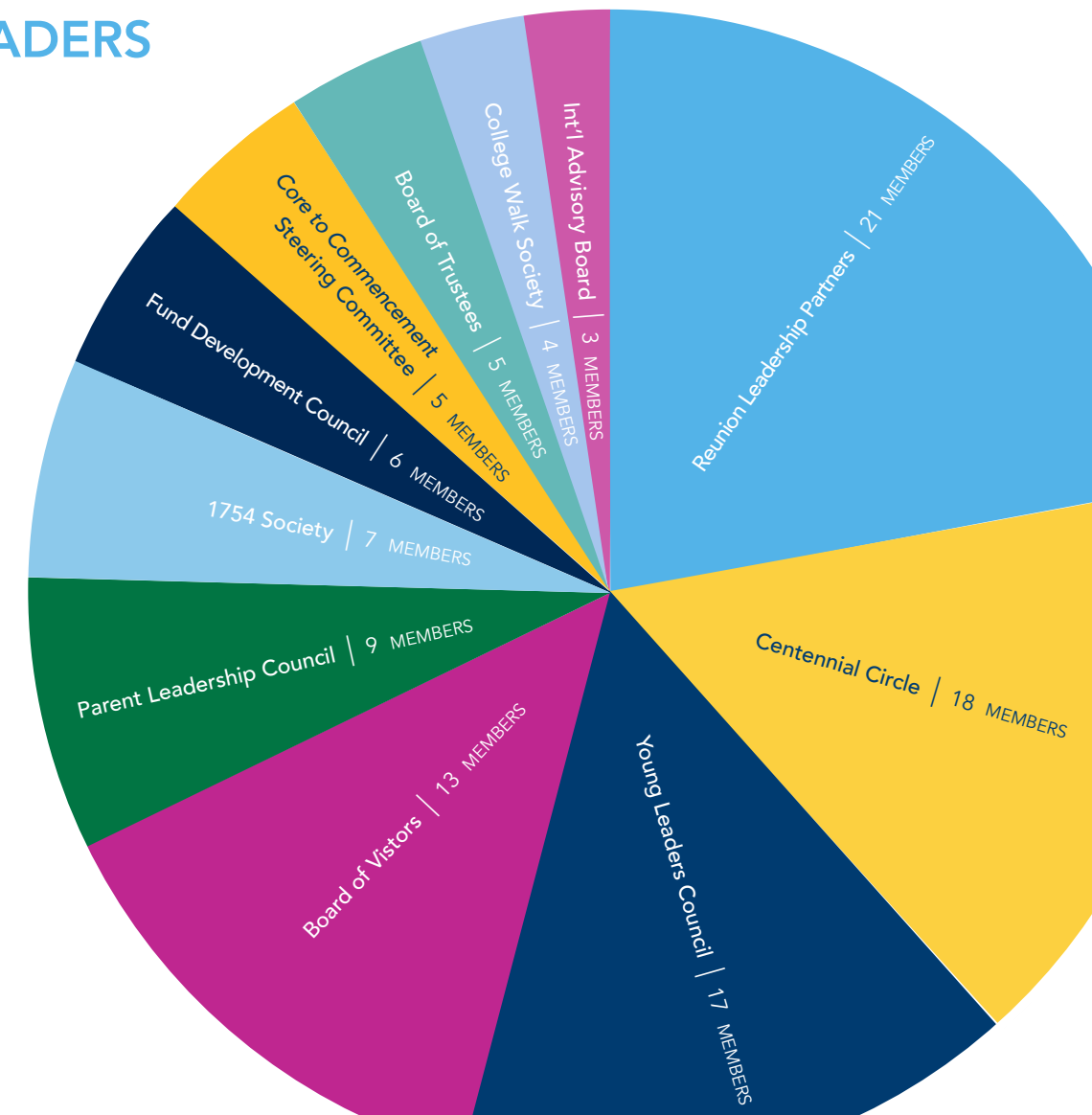
- |                                     |   |
|-------------------------------------|---|
| Lydia C. Callaghan CC'92            | Joanna E. Herman CC'98                          |
| Yahphen Y. Chang CC'87, P: CC'24    | Kristine Kennedy CC'91, LAW'94, P: CC'24, CC'25 |
| Claudia P. Choi CC'96, SIPA'98      | Begumhan Kurdoglu CC'20                         |
| Beatrice M. Edmonds CC'19           | Grace Lang CC'93                                |
| Leslie N. Estrada CC'94             | Emily Miles Terry CC'89                         |
| Cornelia L. Gallo CC'88             | Grace Wu SEAS'00                                |
| Suzanne Greenstein Vogel CC'99      |   |
| Catherine Holst Grimm CC'96, LAW'02 |   |

## GLOBAL REACH



## ALUMNAE LEADERS

Members of the Alumnae Legacy Circle demonstrate leadership through their dedicated work and incredible generosity. They lend their support, time and expertise to serve the Columbia community.



# THANK YOU

## SPECIAL THANKS TO CINDY Z. MICHEL CC'95

In June, Cindy Z. Michel CC'95 stepped down as co-chair of the Alumnae Legacy Circle after **three years of dedicated work**. We are truly grateful for the enthusiastic support and tireless effort she demonstrated throughout her tenure.

As co-chair, Cindy served as a valued partner and volunteer — hosting virtual and in-person events, **leading fundraising efforts and engaging current and potential members**. She generously hosted countless events in New York City over the years — a lively brunch for members at Bagatelle, a prospect lunch at Brasserie 8 ½, which resulted in several new members, and a virtual reception with Dean Valentini. Her leadership demonstrated a deep investment in growing ALC membership and building community at Columbia.

Cindy is joining former ALC co-chairs in exploring other leadership roles at Columbia, and we are grateful that ALC women like her continue to represent the College. **Her generosity and dedication is an inspiration to our community.**

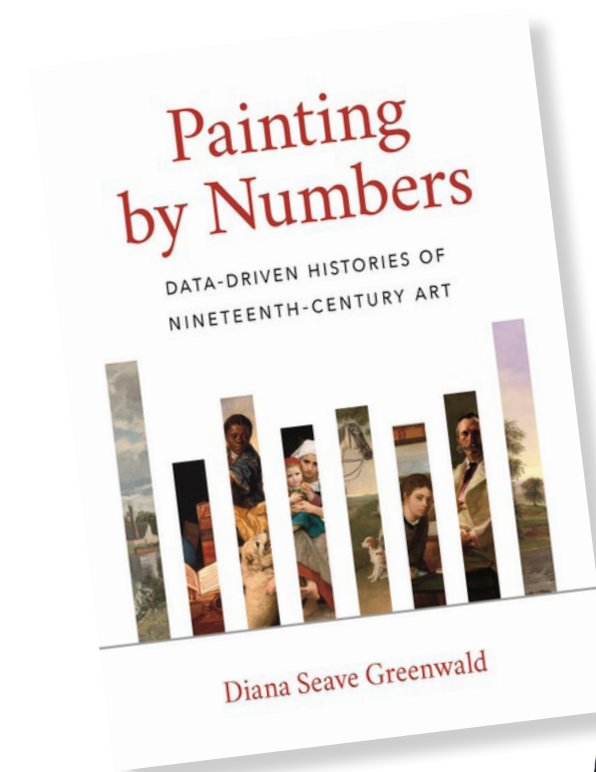


ALC member brunch at Bagatelle

## SPECIAL THANKS TO DIANA GREENWALD CC'11

In September, Diana Greenwald CC'11 took on the role of **vice chair of the Alumnae Legacy Circle**. She brought a valuable and strategic perspective as a young professional, **partnering with staff, meeting and welcoming new young alumnae to the ALC and so much more**. Diana also led a discussion about her book, *Painting by Numbers: Data-Driven Histories of Nineteenth-Century Art*, for ALC members and prospects in March.

We extend our gratitude to Diana for her **generosity and commitment to the ALC community**.



2020–21

# SPECIAL EVENTS

Members of the ALC have access to a curated selection of events and programming to foster community among members and other leaders at the College.



July 17, 2020

## ALC & Senior Fund Networking Event

Virtual opportunity for recent graduates to engage with ALC members



October 15, 2020

## Homecoming Happy Hour

Hosted by June Boonyasai  
Lehv CC'95, DM'00,  
ORTHO'02 and Cindy Z.  
Michel CC'95



November 11, 2020

## Los Angeles Alumnae Virtual Conversation with Joanna Stalnaker, Paul Brooke Program Chair for Literature Humanities and Professor of French

Hosted by Sarah Aibel CC'92,  
P: CC'23 and Mary Vig CC'91



November 19, 2020

## Virtual Conversation for Current Columbia Parents with Matthew Patashnick, Associate Dean for Student and Family Support

Hosted by Nairi C. Balian CC'88,  
P: CC'16, CC'22, CC'23



February 18, 2021

## Virtual Reception with James J. Valentini, Dean of Columbia College and Vice President for Undergraduate Education

Hosted by Cindy Z. Michel CC'95



March 24, 2021

## Virtual Chat with Diana Greenwald CC'11

Hosted by Kelley Buechel  
Badishkanian CC'98, BUS'08



May 20, 2021

## ALC Virtual Happy Hour

Hosted by Sarah Aibel CC'92,  
P: CC'23 and Mary Vig CC'91

2020–21

# AREAS OF SUPPORT

Members of the Alumnae Legacy Circle gave a **remarkable \$2.3 million to the Columbia College Fund** during the 2020–21 fiscal year. These gifts are current-use, meaning the full amount is immediately available to be spent. Contributions to the College Fund can be unrestricted, so they can be used where they are needed most, or directed to the **Core Curriculum, financial aid, internships or student life**. See the top areas of support:



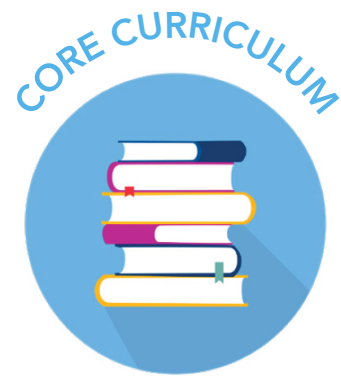
**\$945,000**

To meet the immediate needs of students



**\$815,000**

To sustain need-blind admissions and full-need financial aid



**\$373,000**

To strengthen Core programming

ALC members also gave an additional **\$2.42 million to other areas of Columbia College**, supporting various funds, including endowed funds. Endowed funds provide Columbia with a reliable source of income in perpetuity. They are invested and the accumulated appreciation and income is used to fund an annual distribution. Combined with the College Fund, **this support helps the College meet the needs of students each year**.

**Multi-year commitments** are leadership pledges that are paid over 3 to 5 years. They enable donors to invest in the College into the future and provide ongoing support. **Seventeen ALC members generously made new multi-year commitments** to support the most vital needs of the College this year.

## SUPPORT ACROSS COLUMBIA

ALC members generously gave \$900,000 to other areas of Columbia, supporting student success, faculty excellence, and so much more throughout the University.



COLUMBIA UNIVERSITY  
SCHOOL OF THE ARTS



COLUMBIA LAW SCHOOL



COLUMBIA | SIPA  
School of International and Public Affairs



COLUMBIA | SCHOOL OF NURSING



THE EARTH INSTITUTE  
COLUMBIA UNIVERSITY

COLUMBIA | Zuckerman Institute

COLUMBIA  
ATHLETICS

# NAMED SCHOLARSHIPS

Members of the Alumnae Legacy Circle **funded 28 current-use and endowed Named Scholarships** during the 2020–21 academic year. These scholarships are essential to the College, helping meet its commitment to offering need-blind admissions and full-need financial aid. Meet three students who benefited from ALC support.

Without a financial burden, I have been able to fully enjoy my college experience. **I have found Columbia to be everything I imagined and more.** I have been able to learn from professors at the top of their fields, take classes that completely shifted my perspective, and learned with insightful and like-minded peers. I have found a sense of community in the clubs I have joined, like The Women’s Network, Black Pre-Professional Society, and Circa.

– Ruth Dejene CC’24

*Recipient of the Kyra Tirana Barry and David Barry Scholarship Fund, generously supported by Kyra Tirana Barry CC’87, P: CC’17*



This financial aid package means so much to me and my family. I would not be able to leave my home state of Montana for college without it. I cannot express how much I appreciate the support. **This package makes it feel like someone believes in me,** which is often the most important part of success.

– Caleb Stanicar CC’23

*Jennifer Maxfield Ostfeld and Scott D. Ostfeld Family Scholarship Fund, generously supported by Jennifer Maxfield Ostfeld CC’99*



I am very grateful to receive this scholarship to help finance my tuition. Your aid has enabled me to take so many interesting classes as I work toward a major in computer science. **I am very much looking forward to the rest of my college career.**

– Kenneth Kiprotich CC’22

*Recipient of the Dave and Emily Terry Scholarship, generously supported by Emily Miles Terry CC’89*



# MEMBER HIGHLIGHTS

The members of the Alumnae Legacy Circle are deeply committed to supporting the College and enriching the experiences of students. **Their generosity makes a difference** in all areas of Columbia College and demonstrates the collective power of female-driven philanthropy.

**Mary Corley Dunn CC'98** joined the ALC in 2019 and established the Mary Sayer Voellinger Scholarship in memory of her grandmother in 2020. Mary remembers her grandmother as lively, creative, and resourceful and believes she would have been delighted to know that her name and her memory are the inspiration behind a scholarship that makes a Columbia education a possibility for others.



**Joanna C. Herman CC'98**, who joined the ALC in 2021, is a longtime supporter of Columbia College. She and her husband, Brooks Herman CC'98, established the Herman Family Foundation Summer Internship in 2006 to support Columbia College students pursuing unpaid public sector international internships. So far, they have provided funding to more than 40 students.



**Begumhan Kurdoglu CC'20** made her first contribution to Columbia College and joined the ALC and Young Leaders Council in May 2021. As the 108th member of the ALC, Begumhan chose to direct her support to the Columbia College Fund, the Core Curriculum, and the College Fund Scholarships. A proud College alumna, Begumhan said she had the best four years at Columbia thanks to her esteemed professors and classmates. She is happy to give back to this community she is deeply connected to and loves dearly.



**Cecilia C. Wang CC'09, LAW'12** joined the ALC in 2020 after a trip to campus reinvigorated her appreciation for her experiences at Columbia. She credits Columbia's volunteer opportunities for providing a foundation for her legal pro bono work. Cecilia, a member of the Centennial Circle, believes the Core Curriculum is a truly transformative academic experience and is inspired by all the ways that the nuggets of knowledge and perspectives gleaned from those cozy seminars have continued to enrich her life.





2020–21

## ALUMNAE LEGACY CIRCLE MEMBERS

### CO-CHAIR

Cindy Z. Michel CC'95

### VICE CHAIRS

Sarah Aibel CC'92 P: CC'23

Diana Greenwald CC'11

Mary Vig CC'91

### MEMBERS

Lori Alvino McGill CC'99, LAW'03

Alisa Amarosa Wood CC'01, BUS'08

Jennifer Anglade Dahlberg CC'93, P: CC'23

Noa Arias CC'01

Maiken E. Baird CC'89

Sheetal M. Banerjee CC'89, P: CC'24

Olivia R. Barry CC'17

Samara Bernot Meshel CC'92, P: CC'18,  
CC'23

Francesca Bodini CC'06, BUS'09

June Boonyasai Lehv CC'95, DM'00, DM'02,  
P: CC'25

Anna E. Brockway CC'92

Kelley Buechel Badishkanian CC'98, BUS'08

Lydia C. Callaghan CC'92

Lisa L. Carnoy CC'89

Joyce Chang CC'86, P: CC'24

Leslie Chang CC'92, JRN'95

Yahphen Y. Chang CC'87, P: CC'24

Cynthia Chen CC'04, GSAS'14

Dehua Chen CC'92

Germaine Choe CC'95

Claudia P. Choi CC'96, SIPA'98

Debra C. Chow CC'01

Jennifer C. Chung CC'98

Mary Corley Dunn CC'98

Christine Cronin Hurst CC'84

Alexandra S. Diamond CC'91

Elana Drell Szyfer CC'91, P: CC'25

Beatrice M. Edmonds CC'19

Abigail B. Elbaum CC'92, BUS'94

Michele A. Esposito CC'96

Michelle Estilo Kaiser CC'87, PH'92, PS'97,  
P: CC'20, CC'25

Leslie N. Estrada CC'94

Stephanie Falcone Bernik CC'89, P: CC'24

Catherine A. Froman CC'88

Cornelia L. Gallo CC'88

Dorcas W. Gardner CC'90

Leslie Gittess Brodsky CC'88, P: CC'23,  
CC'25

Michelle J. Goldberg CC'91, P: CC'25

Suzanne Greenstein Vogel CC'99

Yael Halaas CC'92

Hilary R. Hatch CC'92

Joanna E. Herman CC'98

Maya Ho CC'18

Sandra H. Hoffen CC'87

Wanda M. Holland Greene CC'89, TC'91

Divonne M. Holmes à Court CC'87

Catherine Holst Grimm CC'96, LAW'02

Nina L. Hong CC'93, LAW'96

Emily N. Hu CC'95, PS'00

Britta W. Jacobson CC'96

Gail A. Katz CC'97

Alison P. Kay CC'06

Kristine Kennedy CC'91, LAW'94, P: CC'24,  
CC'25

Mojdeh L. Khaghan CC'88, LAW'91,  
P: CC'17

Sungmee Kim CC'97

Mary A. Kuo CC'92, P: CC'20, CC'21, CC'25

Kara M. Kupferberg CC'18, SIPA'19

Begumhan Kurdoglu CC'20

Christine W. Lai CC'95

Grace Lang CC'93

Emily H. Lavine CC'18

Amy H. Lee CC'94

Sunhee Lee CC'90

Jennifer M. Levine CC'91, P: CC'22

Pamela M. Levine CC'93

Julie A. Levy CC'91, P: CC'21, CC'25

Tina Lin CC'91, PS'96

Donna H. MacPhee CC'89, P: CC'17

Karen A. Mahoney CC'88, P: CC'19

Jennifer Maxfield Ostfeld CC'99, JRN'00

Emily Miles Terry CC'89

Meredith Milstein Polivy CC'09, BUS'17

Janice Mok Ince CC'01

Cassey Morales CC'96

Juwa Nguy CC'95

Caitlin Prendergast Brodie CC'06

Caroline Puri Mitchell CC'02

Sumana Rao CC'08

Maria A. Rodino CC'88, P: CC'18, CC'20,  
PS'23

Olivia C. Santoro CC'13, BUS'20

Teresa M. Saputo-Crerend CC'87, BUS'92,  
P: CC'22

Sarah Schragger Gitlin CC'13

Claire C. Shipman CC'86, SIPA'94

Esther R. Sholes CC'91

Beth E. Shubin Stein CC'91, PS'96

Lara Stolman CC'91

Michelle Tan CC'16

JoBeth Tananbaum Abecassis CC'07

Claire E. Theobald CC'88

Kyra Tirana Barry CC'87, P: CC'17

Mila H. Tuttle CC'96, SIPA'05

Shazi Visram CC'99, BUS'04

Cecilia C. Wang CC'09, LAW'12

Sandy Wang CC'92, P: CC'24

Ellen A. Weinstein CC'93

Elizabeth Weir Factor CC'91

Sherri P. Wolf CC'90, P: CC'21, CC'24

Grace Wu SEAS'00

Sharon Yang CC'08

Christina Ying CC'89

Nina Zipser CC'94

Anonymous CC'88

Anonymous CC'89

Anonymous CC'90

Anonymous CC'94

Anonymous CC'98

Anonymous CC'04

Anonymous CC'04



COLUMBIA COLLEGE  
**ALUMNAE LEGACY CIRCLE**

[college.columbia.edu/alumni/alc](https://college.columbia.edu/alumni/alc)  
kd2765@columbia.edu | 212-851-7452