

2023-24  
ANNUAL REPORT

## A MESSAGE FROM OUR CO-CHAIRS

---

Dear fellow members,

Thank you for your membership in the Alumnae Legacy Circle. **Your generous support of Columbia College — and deep commitment to elevating the impact and leadership of women at our school — is inspiring.** We continue to be so proud to be part of this community.

The **2023–24 Alumnae Legacy Circle Annual Report** showcases many of the remarkable accomplishments of our ALC members. Despite the challenges of the year, members continued to connect with one another, and the ALC expanded its reach and invested in current and future Columbia College students. We hope you enjoy reflecting on these efforts.

In March, we were so happy to welcome Fay Kastrinos CC'95 P: CC'27 as our 150th ALC member — more about Fay in the pages ahead — and were thrilled to see our membership grow to **153 members** by the end of the fiscal year. This group came together to raise a remarkable **\$3.3 million** for Columbia College, including **\$2.1 million** that was directed to the Columbia College Fund. The generosity of the ALC has impacts across the College, supporting the Core Curriculum, student life offerings, need-based financial aid, internships and research stipends, and so much more. Thank you for being a part of these incredible results.

We are grateful to have expanded our leadership in 2023–24, with **Gail A. Katz CC'97** and **Shaziya Keswani CC'04, OT'08** taking on roles as ALC vice chairs. Their efforts as thought leaders, in planning and hosting events, and as liaisons and representatives are critical to the ALC's mission.

Thank you for your membership in the ALC. Your dedication, generosity and engagement make this community special.

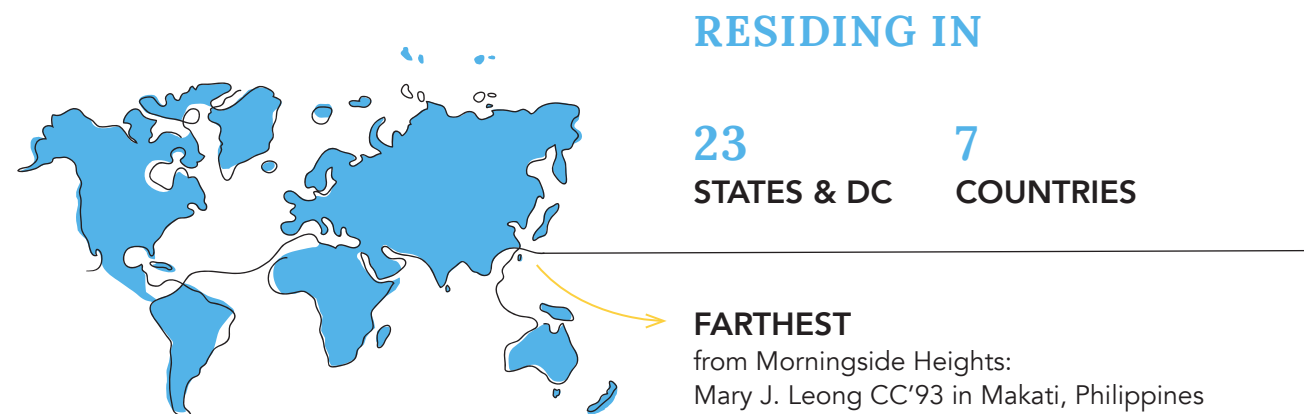
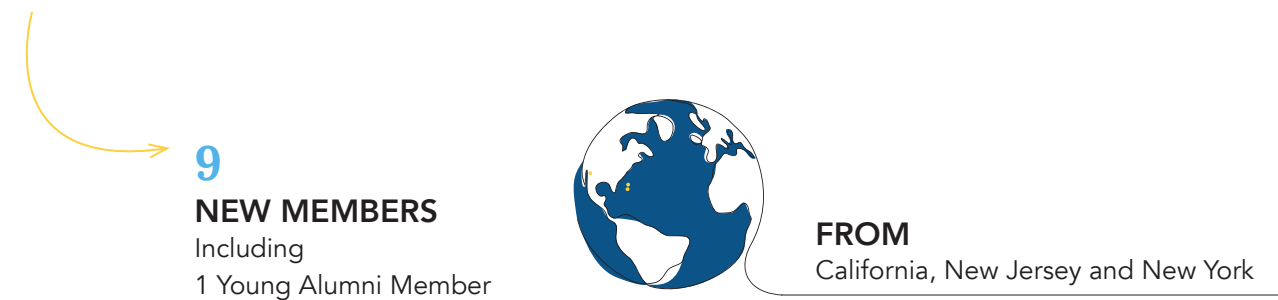
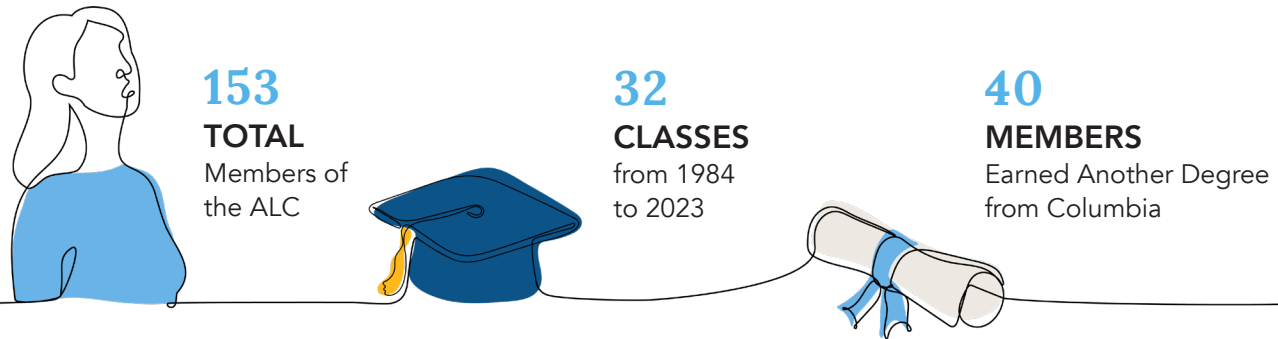
Sincerely,

Kelley Badishkanian CC'98, BUS'08  
Germaine Choe CC'95  
Diana Greenwald CC'11  
*Co-chairs, Alumnae Legacy Circle*

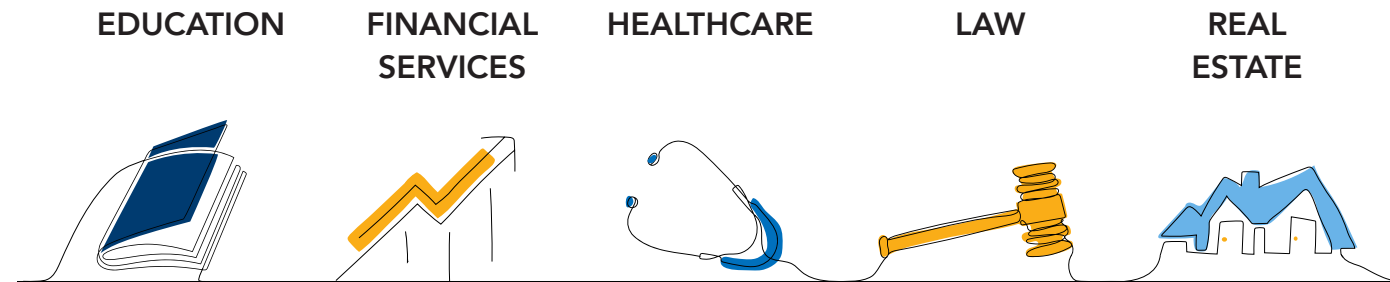


# 2023-24 MEMBER STATS

Thank you to the members of the Alumnae Legacy Circle! This diverse and vibrant group continues to grow and expand its impact on the College community.



## TOP PROFESSIONAL INDUSTRIES



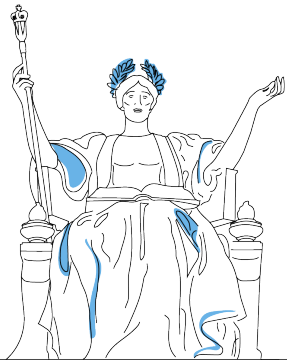
## LEADERS ACROSS THE UNIVERSITY



## 2023-24 FUNDRAISING TOTALS

Members of the Alumnae Legacy Circle generously contributed **\$3.3 million** to Columbia College during the 2023-24 Fiscal Year, investing in the programs and resources that make the College experience exceptional.

### SUPPORT OF COLUMBIA COLLEGE

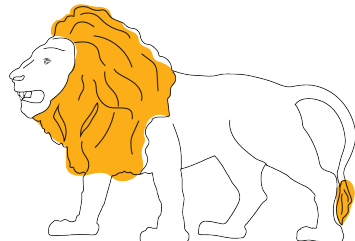


**\$2.1 MILLION**  
TO THE COLUMBIA  
COLLEGE FUND

**\$980,000** Financial Aid  
**\$920,000** Unrestricted  
**\$190,000** Core Curriculum

**\$1.2 MILLION**  
TO OTHER AREAS OF  
COLUMBIA COLLEGE

**\$670,000** Endowed Scholarships  
**\$290,000** John Jay Awards and  
Hamilton Award Dinners  
**\$200,000** Core Curriculum



## 2023-24 SUPPORTING FINANCIAL AID

### NAMED SCHOLARSHIPS

Named Scholarships are the cornerstone of Columbia College's financial aid program. They provide some of the funding that makes it possible for the College to offer need-based support to students. These scholarships provide critical support to students, enabling them to make the most of their Columbia experience.

During the 2023-24 academic year, **47 ALC members funded 52 current-use and endowed Named Scholarships**. These scholarships provided essential support to 79 students.

### COLLEGE WALK SOCIETY

The College Walk Society is a leadership giving society for alumni, parents and friends who make a meaningful contribution in support of financial aid at the College. Members are among the most generous financial aid donors. The College is proud to have **more than 150 members, which includes 21 ALC members**.

## 2023-24 SPECIAL EVENTS

Throughout the year, members of the Alumnae Legacy Circle are invited to events and programs that foster community among members and provide access to College leadership.



October 28, 2023  
**NYC Member Brunch**  
Uva — NYC  
Hosts: Shaziya Keswani CC'04, OT'08  
and June Boonyasai Lehv CC'95, DM'00,  
DM'02, P: CC'25, CC'27



December 3, 2023  
**West Coast Member Brunch**  
Sarah Aibel's Home — Santa Monica, CA  
Hosts: Sarah Aibel CC'92, P: CC'23, CC'25,  
SEAS'28 and Gail A. Katz CC'97



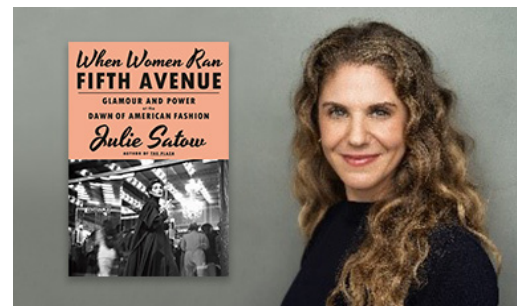
February 22, 2024  
**Exclusive Discussion with  
Gerrard P. Bushell CC'83**  
Conversation about JFK Airport's  
New Terminal One (NTO)



March 26, 2024  
**ALC-Exclusive Conversation with  
Dean Josef Sorett**  
Hamilton Hall, Columbia University — NYC



April 25, 2024  
**Boston Member Brunch**  
Contessa Restaurant at the Newbury — Boston  
Host: Germaine Choe CC'95



June 24, 2024  
**ALC and CCW Book Talk:  
When Women Ran Fifth Avenue**  
with author Julie Satow CC'96, SIPA'01



**Melissa de la Cruz CC'93** was the 2024 Los Angeles recipient of the Spirit of Innovation & Creativity Award at Columbia College's West Coast Honors.

## MEMBER HIGHLIGHT

Last year, the Alumnae Legacy Circle welcomed its 150th member, **Fay Kastrinos CC'95, P: CC'27**. While Fay was new to the ALC, her history with Columbia is long-standing. Both she and her husband, John M. Poneros CC'91, VPS'95, P: CC'27 are alumni of the University who now work at its medical center. Their son, Mark, is an undergraduate at the College. From the Core classes that evoked her Greek heritage, to the service opportunities that instilled empathy in her medical practice, **Fay identifies her time at Columbia College as a milestone in her life, one that motivates her to give back.**



*Fay at Columbia Homecoming, 1994*

When we meet on campus, Fay greets us with enthusiasm, an ALC pin shining on her lapel. “Columbia pride,” she tells us, “is a part of [my family’s] identity.” Her demeanor is one anyone would wish for their doctor: warm and reassuring. Fay and John are gastroenterologists at Columbia University Irving Medical Center, having returned to their alma mater in 2008 to continue their practices. For Fay, it was nothing short of a homecoming.

Fay was a part of the Class of 1995, studying biology and psychology on the premed track. As the child of Greek immigrants, she was the first in her family to go to college. She remembers the thrill of stepping onto campus and seeing the names of Greek thinkers adorning Butler Library. **“It evokes pride, enthusiasm and loyalty,”** she says. Her exploration of her cultural identity didn’t end there — through the Core Curriculum, Fay read Homer’s epics, allowing her to connect ancient texts to her lived experience.

Although Fay and her husband did not meet on campus, their relationship is undoubtedly a Columbia love story. In 1998, they were set up on a blind date by mutual friends, sparking an instant connection. Early in the relationship, when Fay visited John’s family, they pulled out photo albums from his graduation ceremony. On that rainy day, John’s uncle had proudly taken a picture of his nephew in his M.D. regalia. And there, in the

picture, was Fay — celebrating the closing of her undergraduate career. “It was cosmic,” she jokes.

When Fay and John were recruited to Columbia, she knew it would be a great fit and was eager to return. Even in her professional life, **she embodies the Core’s goal of inviting curiosity and transcending disciplines.** As a gastroenterologist-in-training, she delved into clinical cancer genetics when the field was still in its infancy. Now, she is able to offer a more holistic patient experience, often cultivating special relationships with patients and their families.

To Fay, service is not only an essential part of her job, but her role as an alumna. When she was an undergraduate, she had participated in Community Impact at Columbia University, assisting elders-in-need in Morningside Heights. The real-world experience helped her build an empathetic perspective — something she hopes to cultivate in current

*Fay and her husband, John, in their graduation ceremony photo*



undergraduates. When Fay joined the ALC, she made clear that students could reach out to her for guidance and resources, especially those who were premed. From her perspective, it is a mutual exchange, allowing her to see the progress of younger generations.

Now, Fay gets to re-experience Columbia College through the eyes of her son, Mark. “It’s like, I’ve walked this College walk, I’ve sat on these steps, I studied in that chair,” she reminisces. Excitingly, Mark has also made connections between his classes and his heritage. “The fact that he also has that thought process,” says Fay, “it speaks to how the material is taught [and] how immersive the experience is.” Nonetheless, she also recognizes the difference between their experiences. With the influx of information and the fast pace of technology, she sometimes wonders how students are able to make sense of the world around them. Yet, **she is reassured by the fact that the Columbia student body is — and has always been — exceptional.**

While Fay is nostalgic for Columbia in her memories, she sees herself continuing to evolve with the campus. **She firmly believes that alumni involvement is crucial to sustaining the things that made her time at the College life-changing, encouraging students to be curious, be empathetic and have the courage to make a difference.** At the end of the interview, we make our way onto the lawn where Fay gazes at Butler, looking contemplative. “There will always be progress, growth, dialogue and open-mindedness,” she reflects. “It could pass you by if you are not allowing yourself to blossom.” For Fay, it all begins with giving back.



Fay on campus, 2024

## 2023–24 ALUMNAE LEGACY CIRCLE

Columbia College is proud to recognize the 153 members of the Alumnae Legacy Circle. Thank you for your generous investment in the College and this community.

### CO-CHAIRS

Kelley Buechel Badishkanian CC'98, BUS'08  
Germaine Choe CC'95  
Diana Greenwald CC'11

### VICE CHAIRS

Sarah Aibel CC'92, P: CC'23, CC'25, SEAS'28  
Emily N. Hu CC'95, PS'00  
Gail A. Katz CC'97  
Shaziya Keswani CC'04, OT'08

### 1754 SOCIETY AMBASSADOR

Daria L. Ibn-Tamas CC'96

### MEMBERS

Tala T. Akhavan CC'13  
Lori Alvino McGill CC'99, LAW'03  
Alisa Amarosa Wood CC'01, BUS'08  
Jennifer Anglade Dahlberg CC'93, P: CC'23  
Noa Arias CC'01  
Maiken E. Baird CC'89  
Allyson B. Baker CC'95  
Nairi C. Balian CC'88, P: CC'16, CC'22, CC'23, CC'26, SIPA'25  
Sheetal M. Banerjee CC'89, P: CC'24  
Olivia R. Barry CC'17  
Samara Bernot Meshel CC'92, P: CC'18, CC'23  
Francesca Bodini CC'06, BUS'09  
June Boonyasai Lehv CC'95, DM'00, DM'02, P: CC'25, CC'27

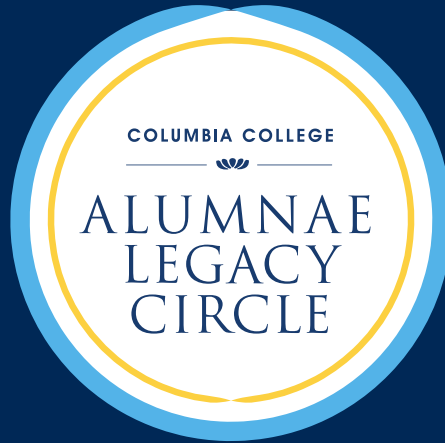
Anna E. Brockway CC'92, P: CC'26  
Lydia C. Callaghan CC'92, SW'24  
Lisa L. Carnoy CC'89, P: CC'26, CC'28  
Joyce Chang CC'86, P: CC'24, PH'25  
Leslie Chang CC'92, JRN'95, P: CC'28  
Yahphen Y. Chang CC'87, P: CC'24  
Cynthia Chen CC'04, GSAS'14  
Dehua Chen CC'92  
Claudia P. Choi CC'96, SIPA'98, P: CC'27  
Debra C. Chow CC'01  
Jennifer C. Chung CC'98  
Mary Corley Dunn CC'98  
Christine Cronin Hurst CC'84  
Helena Daras CC'01  
Melissa A. de la Cruz Johnston CC'93  
Lexi S. Diamond CC'91, P: CC'26  
Elana Drell Szyfer CC'91, P: CC'25  
Beatrice M. Edmonds CC'19  
Abigail Elbaum CC'92, BUS'94  
Michele A. Esposito CC'96  
Michelle Estilo Kaiser CC'87, PH'92, PS'97, P: CC'20, CC'25  
Leslie N. Estrada CC'94, P: CC'26  
Stephanie Falcone Bernik CC'89, P: CC'25  
Catherine A. Froman CC'88  
Cornelia L. Gallo CC'88  
Dorcas W. Gardner CC'90  
Ana Genender O'Brien CC'93, LAW'96  
Leslie Gittess Brodsky CC'88, P: CC'23, CC'25  
Michelle J. Goldberg CC'91, P: CC'25, CC'28  
Purvi S. Goor CC'97

Suzanne Greenstein Vogel CC'99  
Yael Halaas CC'92  
Hilary R. Hatch CC'92  
Joanna E. Herman CC'98  
Maya Ho CC'18  
Sandra H. Hoffen CC'87  
Wanda M. Holland Greene CC'89, TC'91,  
TC'21  
Divonne M. Holmes à Court CC'87  
Catherine Holst Grimm CC'96, LAW'02  
Nina L. Hong CC'93, LAW'96  
Adria C. Hou CC'02  
Jennifer S. Hsia CC'06  
Alina R. Huo CC'96  
Erin Z. Hussein CC'92, LAW'95, P: CC'27  
Britta W. Jacobson CC'96, P: CC'28  
Fay Kastrinos CC'95, P: CC'27  
Stefanie F. Katz-Rothman CC'88, P: CC'26  
Alison P. Kay CC'06  
Kristine Kennedy CC'91, LAW'94, P: CC'24,  
CC'25  
Katrina M. Kerkering CC'93  
Mojdeh L. Khaghan CC'88, LAW'91, P: CC'17  
Sungmee Kim CC'97  
Penny W. Kline CC'91, LAW'97  
Mary A. Kuo CC'92, P: CC'20, CC'21, CC'25  
Kara M. Kupferberg CC'18, SIPA'19  
Begumhan Kurdoglu CC'20  
Joanne N. Kwong CC'97  
Patricia L. Labrada CC'91, P: CC'23  
Christine W. Lai CC'95  
Grace Lang CC'93, P: CC'28  
Amy H. Lee CC'94  
Danielle M. Lee CC'97, BUS'04  
Karen Lee CC'92  
Sunhee Lee CC'90

Mary J. Leong CC'93  
Jennifer M. Levine CC'91, P: CC'22, CC'28  
Pamela M. Levine CC'93  
Julie A. Levy CC'91, P: CC'21, CC'25  
Sherry S. Lin CC'94  
Tina Lin CC'91, PS'96  
Donna H. MacPhee CC'89, P: CC'17  
Karen A. Mahoney CC'88, P: CC'19, CC'27  
Jennifer Maxfield Ostfeld CC'99, JRN'00  
Megan J. McGowan Epstein CC'94  
Sarah Mernick CC'07  
Ritu Metzger CC'94, P: CC'26  
Cindy Z. Michel CC'95  
Emily Miles Terry CC'89  
Meredith Milstein Polivy CC'09, BUS'17  
Janice Mok Ince CC'01  
Cassey Morales CC'96  
Heather Moylan Meyerdirk CC'06  
Sophia A. Naqvi CC'23  
Juwa Nguy CC'95  
Mary O'Donnell Hulme CC'92, SIPA'95  
Kathryn R. O'Donnell-Schlatter CC'93  
Maya V. Pandit CC'17, PH'19  
Sejal Patel Daswani CC'95, SIPA'96  
Caitlin Prendergast Brodie CC'06  
Christina Pullo Daloia CC'00  
Caroline Puri Mitchell CC'02  
Jenny F. Raj CC'00  
Sumana Rao CC'08  
Maria A. Rodino CC'88, P: CC'18, CC'20,  
CC'26, PS'23  
Emily L. Rosin CC'18  
Olivia C. Santoro CC'13, BUS'20  
Teresa M. Saputo-Crerend CC'87, BUS'92,  
P: CC'22  
Amanda Schoenberg CC'92, PS'97

Sarah Schragger Gitlin CC'13  
Courtney A. Schreiber CC'93, P: CC'25  
Diana Semel Allen CC'90  
Tiffani L. Shin CC'95  
Claire C. Shipman CC'86, SIPA'94  
Esther R. Sholes CC'91  
Beth E. Shubin Stein CC'91, PS'96  
Joanna L. Silver CC'89  
Lara Stolman CC'91  
Michelle Tan CC'16  
JoBeth Tananbaum Abecassis CC'07  
Claire E. Theobald CC'88  
Kyra Tirana Barry CC'87, P: CC'17  
Mila H. Tuttle CC'96, SIPA'05, P: CC'26  
Mary Vig CC'91  
Shazi Visram CC'99, BUS'04  
Cecilia C. Wang CC'09, LAW'12  
Sandy Wang CC'92, P: CC'24, CC'28  
Ellen A. Weinstein CC'93  
Elizabeth Weir Factor CC'91  
Sherri P. Wolf CC'90, P: CC'21, CC'24  
Maria S. Wong CC'03  
Grace Wu SEAS'00  
Michelle Yan CC'20  
Sharon Yang CC'07  
Christina Ying CC'89  
Nina Zipser CC'94  
Anonymous CC'86  
Anonymous CC'89  
Anonymous CC'90  
Anonymous CC'94  
Anonymous CC'98  
Anonymous CC'04 (2)





COLUMBIA COLLEGE  
**ALUMNAE LEGACY CIRCLE**

[college.columbia.edu/alumni/alc](https://college.columbia.edu/alumni/alc)

[kq2162@columbia.edu](mailto:kq2162@columbia.edu) | 212-851-7941